

SUPER-C

# ALLEGRO BAY



TIFFIN

20  
23

What's New Summary – Allegro Bay

WHAT'S NEW

- 
- |   |  |   |
|---|--|---|
| • 38 CB Floorplan                                   | • 50th Anniversary Decal   | • Cellular Signal Booster Now Available       |
| • Two New Fabric Suites (Stoney Creek & Soft Suede) | • 50th Anniversary Exterior Paint Color Package                  | • New 14.5' Lippert™ On-The-Go™ Ladder Option |
| • Two New Ultraleather Colors (Trail & Taupe Hills) | • Removed Molded-in Shower Seats                                 | • Updated Dinette Computer Workstation Option |
| • Sea Grass Luxury Vinyl Tile                       | • Updated Dinette Boothe Seating for Lift Up Seat Storage Access | • Side-by-Side Washer and Dryer on 38 AB      |
| • Sandstone Cabinetry                               | • New Wi-Fi Booster  | • Chrome Dryer Vents                          |
|   |  | • Central Vacuum System                       |

NO LONGER AVAILABLE

- 
- |   |                                 |                               |
|---|---------------------------------|-------------------------------|
| • Silver Light III & Urban Putty II Fabric Suites | • Amber Glazed Cabinetry        | • Combo Washer-Dryer on 38 AB |
| • Belgian and Cocoon Ultraleather Colors          | • Sand Castle Luxury Vinyl Tile |                               |



## Premium Paint System



Our eight-step, full-body paint system features premium grade paints sealed with three layers of clear coat with ultraviolet protection. An additional layer of high-performance film protects the front of the coach and select areas.

Images shown are representations of paint layouts only and do not reflect all exterior features or options. Colors shown may slightly differ from colors on actual product.



G1 BARCELONA



G1 NASA



G1 WHITE MAHOGANY



50TH ANNIVERSARY

NEW



G1 FIRE OPAL



G1 FROSTED GRANITE

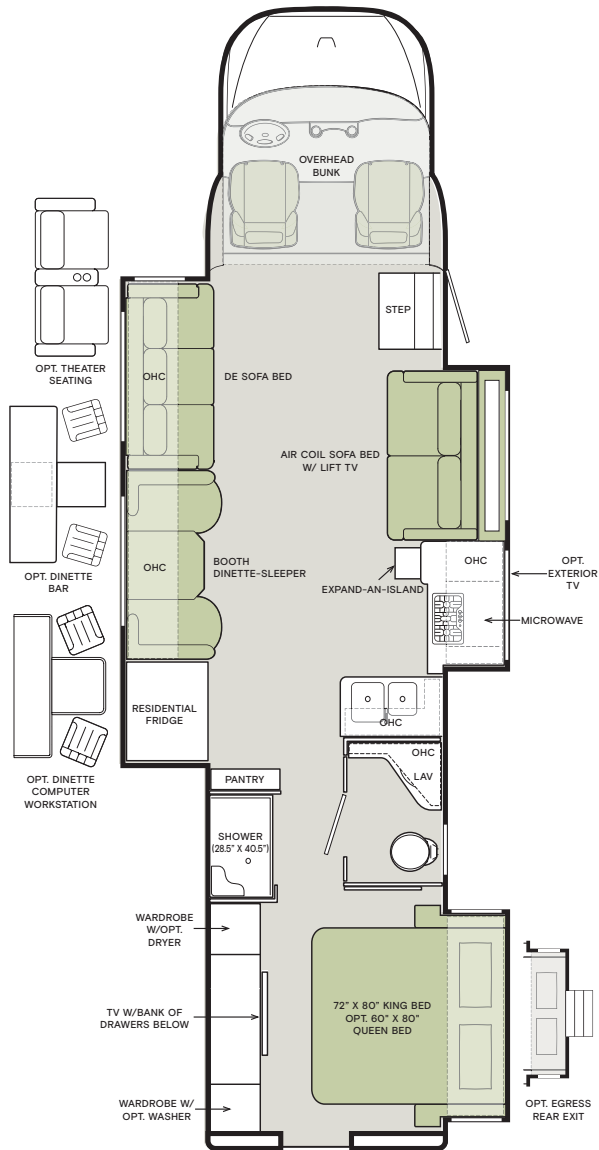


G1 GLACIER BLUE

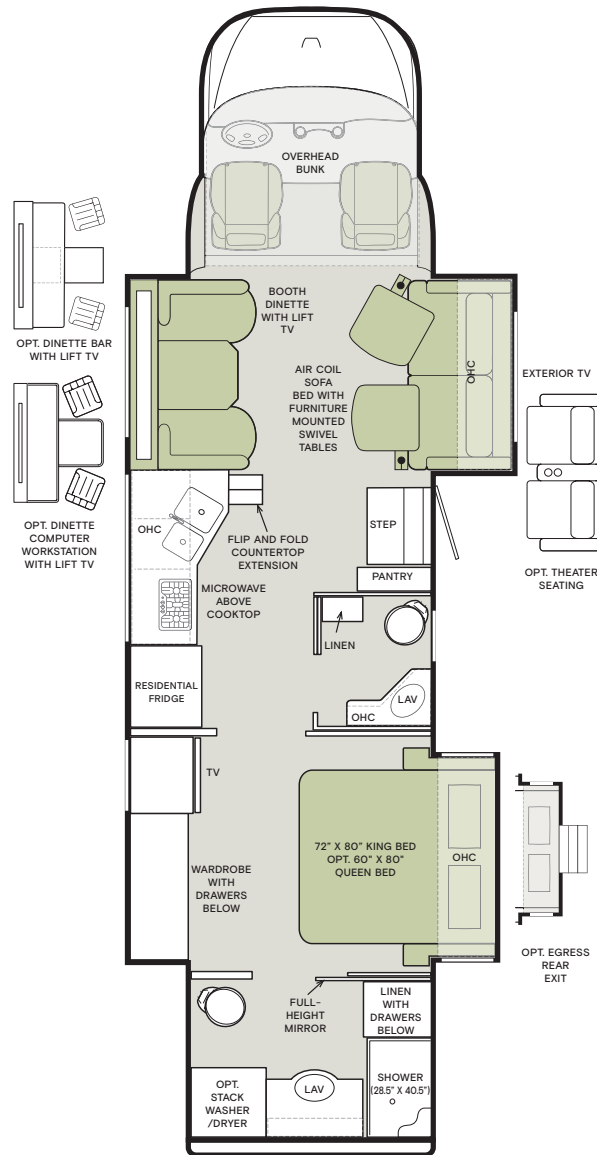


The design of every Allegro Bay floor plan must meet four essential criteria: Maximum space, Optimal organization, Relaxation plus, and Elegant atmosphere. Tiffin's MORE Plans offer your family the most comfortable layout for life on the road.

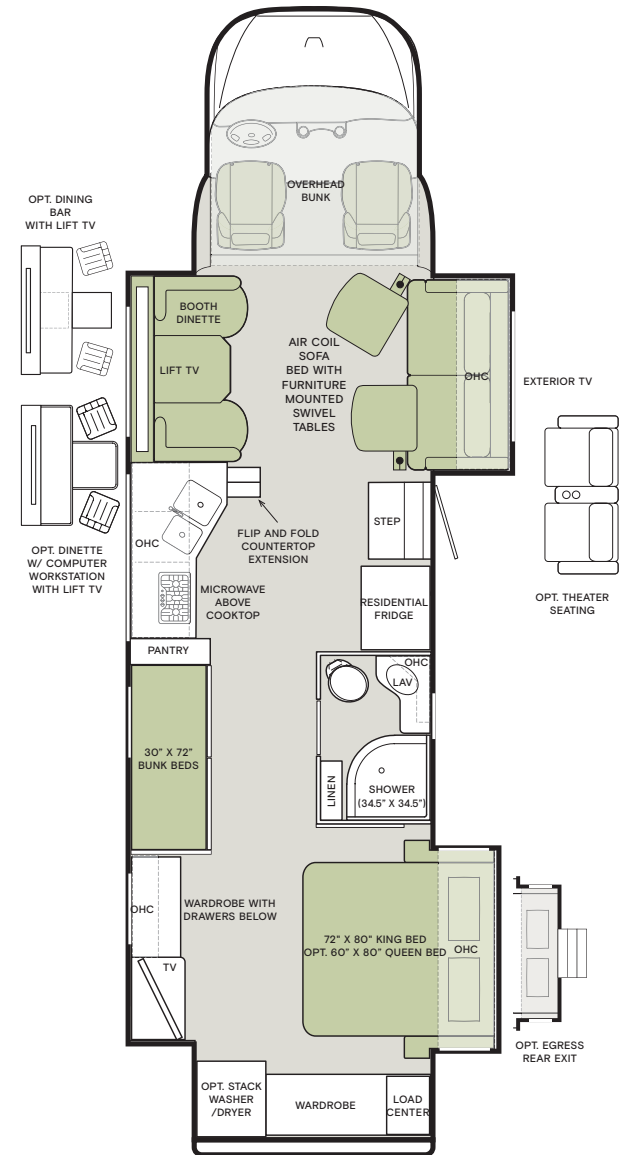
38 AB



38 BB



38 CB



If optional furniture combinations are selected, window locations may vary from diagram shown.

All options may not be available in every model. Because of progressive improvements and specifications, standard and optional equipment are subject to change without notice or obligation.

For a complete and up-to-date list of available options and specifications, visit [tiffinmotorhomes.com](http://tiffinmotorhomes.com).



Interior Décor

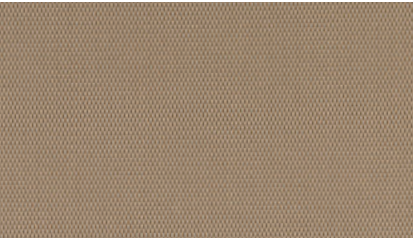
Make your experience on the road all your own. Express yourself by choosing the interior appointments such as cabinet finishes, flooring, and décor ensembles for every part of your motorhome. In the 2023 Allegro Bay, you'll be able to go in style no matter where you go.

Because of progressive improvements and specifications, standard and optional equipment are subject to change without notice or obligation. For a complete and up-to-date list of available options and specifications, visit [tiffinmotorhomes.com](https://tiffinmotorhomes.com). Colors of interior decor options shown may vary from colors on actual product.



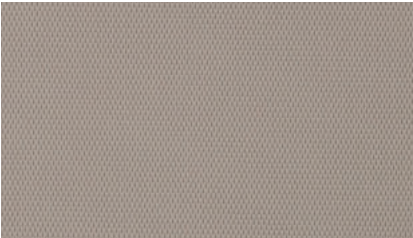
With high-performance functionality and ultimate comfort intertwined, Ultrafabrics® helps to create uniquely sensorial and colorful surroundings.

FURNITURE



TRAIL

NEW



TAUPE HILL

NEW

CABINETS



SANDSTONE

NEW



SHADOW

FLOORING

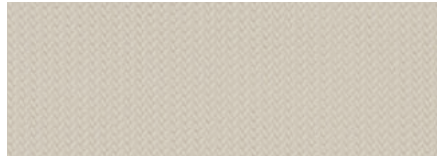


SEA GRASS Matte Finish Tile

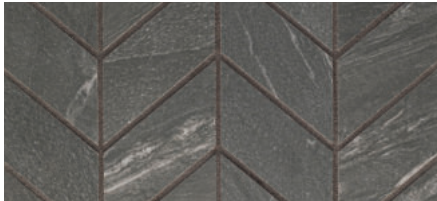
NEW

STONEY CREEK

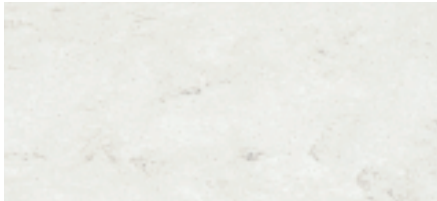
NEW



WINDOW TREATMENT



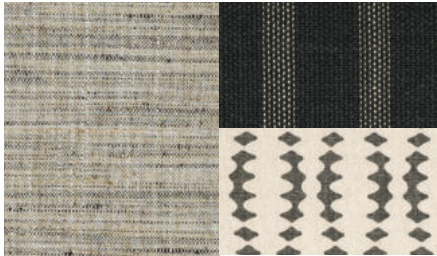
BACKSPLASH



COUNTERTOP



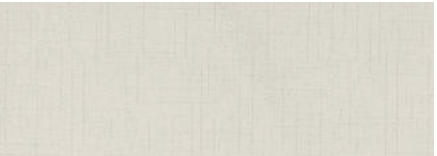
LIVING ROOM



MASTER SUITE

SOFT SUEDE

NEW



WINDOW TREATMENT



BACKSPLASH



COUNTERTOP



LIVING ROOM



MASTER SUITE

## Specifications, Features, and Options

**KEY :** S : Standard Feature | O : Optional Feature; Additional costs may apply | D : Dependent; Availability is dependent on selection of another option | — : Not Available

WEIGHTS AND MEASURES	38 AB	38 BB	38 CB
DIMENSIONS			
Overall Length (approx.) <sup>1</sup>	39' 4"	39' 4"	39' 4"
Overall Width <sup>1</sup>	101"	101"	101"
Overall Height	13' 3"	13' 3"	13' 3"
Minimum Garage Height	14'	14'	14'
Interior Height	82.5"	82.5"	82.5"
Interior Width	96"	96"	96"
Square Footage (approx.) <sup>2</sup>	310	315	320
Basement Storage (cubic feet, approx.)	136	114	144
Wheel Base	279"	279"	279"
WEIGHT LIMITS			
GAWR-Front (pounds)	12,000	12,000	12,000
GAWR-Rear (pounds)	21,000	21,000	21,000
GVWR (pounds)	33,000	33,000	33,000
Maximum Trailer Weight (pounds) <sup>3</sup>	12,000	12,000	12,000
Hitch Rating (pounds)	12,000	12,000	12,000
GCWR (pounds)	45,000	45,000	45,000
CAPACITIES			
Fuel Tank (gallons)	100	100	100
DEF Tank (gallons) <sup>4</sup>	10	10	10
Fresh Water (gallons)	150	150	150
Grey Water (gallons)	70	70	70
Black Water (gallons)	45	45	45
LPG Tank (gallons)	24	24	24

<sup>1</sup> The approximated coach width and length does not include side-view mirrors and rear ladders.

<sup>2</sup> Square footage was calculated with the slide-outs fully extended. Calculations only include living areas and do not incorporate the driver's compartment.

<sup>3</sup> Maximum Trailer Weight is dependent on the loading and towing variables which include the GVWR, GAWR and GCWR, as well as adequate trailer brakes.

<sup>4</sup> Diesel Exhaust Fluid (DEF) is the active component used in Selective Catalytic Reduction (SCR) engines to reduce nitrogen oxide emissions by 90% to meet EPA standards.

### CHASSIS AND DRIVETRAIN

- Freightliner® S2RV Chassis
- Cummins® B6.7 360 HP Diesel Engine with 800 lb-ft Torque <sup>1</sup>
- 185-Amp Alternator
- Allison® 3000 MH 6-speed Automatic Transmission with Lock-up Torque Converter
- Front and Rear 275/80R 22.5 Tires
- Front Radiator
- (2) 12-Volt Flooded Lead-Acid Chassis Batteries
- Hydraulic Leveling Jacks
- Taper Leaf Front Suspension
- Freightliner® Airliner® Rear Suspension with Manual Dump Valve
- Custom Tuned Sachs® Shock Absorbers
- Eaton Tractech NoSPIN® Differential
- Full Air Brake System with Automatic Slack Adjusters
- Heated Air Tanks with Auto Drain Valve
- Single Stage Variable Geometry Turbocharger (VGT) Engine Brake
- Manual Parking Brake
- Automatic Traction Control
- Cruise Control
- Rear Stabilizer Bar
- Tire Inflation Kit with Quick Disconnect Fitting

CHASSIS AND DRIVETRAIN OPTIONS		38 AB	38 BB	38 CB
Wheels	Aluminum Wheels	S	S	S
	Black Aluminum Wheels <b>NEW</b>	O	O	O

<sup>1</sup> Peak horsepower achieved at 2,600 RPM. Peak torque achieved at 1,800 RPM.

ELECTRICAL				
<ul style="list-style-type: none"><li>Spyder Controls Multiplex System Featuring App Compatibility</li><li>8.0-Kilowatt Onan® Quiet Diesel Generator</li><li>2,000-Watt Pure Sine Wave Inverter with Auto-Gen Start</li><li>Extraordinaire™ Air Conditioning System</li><li>(2) 15,000-BTU Air Conditioners with Heat Pumps</li><li>50-Amp Shore Power with Powered Retract Reel</li><li>HD Over-the-air Antenna</li><li>Park Cable and Ground Satellite Hook-up</li><li>Auxiliary Solar Port</li><li>Blu-ray™ Player</li><li>Satellite Receiver</li><li>12-Volt Breaker Panel</li><li>12-Volt Disconnect Switch</li><li>Rotary Disconnect Switches for House Batteries, Chassis Batteries, and Inverter</li><li>Ground Fault Circuit Interrupter (GFCI) Outlets at Galley, Lavatories, and Sewer Bay</li><li>110-Volt Exterior Receptacle</li><li>Surge Guard® Transfer Switch</li><li>USB Receptacles Throughout Coach</li></ul>				
ELECTRICAL OPTIONS		38 AB	38 BB	38 CB
Heating and Cooktop Power Source	Liquid Propane (LP) Coach <sup>1</sup>	S	S	S
	All-Electric Coach <sup>2</sup>	O	O	O
House Batteries	(4) 6-Volt Extended Cycle AGM House Batteries	S	S	S
	(2) 12-Volt Lithium House Batteries	O	O	O
Heat Sources	(1) 35,000-BTU Ducted Furnace <sup>3</sup>	D	D	D
	Aqua-Hot® 250D Heat Exchanger <sup>4</sup>	D	D	D
Satellite	Prep for Satellite	S	S	S
	In-motion Satellite Dish	O	O	O
Solar Panels	Prep for Solar Panels <sup>5</sup>	O	O	O
	(3) 200-Watt Solar Panels with (1) 30-Amp Controller	O	O	O
Cellular Signal Booster	<b>NEW</b>	O	O	O
Wi-Fi Booster	<b>UPDATED</b>	O	O	O

<sup>1</sup> Propane is used to power the ducted furnaces, the water heater, and liquid propane cooktops.

<sup>2</sup> Replaces the ducted furnaces, the Truma AquaGo™ water heater, and liquid propane cooktops with an Aqua-Hot® heat exchanger and induction cooktops. Removes LPG tank. All-electric coaches still require diesel for the engine and either shore power or a generator to operate air conditioning.

<sup>3</sup> Standard with LP coach option.

<sup>4</sup> Replaces ducted furnaces when all-electric coach option is selected. Aqua-Hot® heat exchanger provides both heated air and water.

<sup>5</sup> Includes docking ports for aftermarket solar panels.

### PLUMBING

- Aqua View Showermiser™
- Water Filter
- Water Pump Switch Access from Spyder System and Sewer Bay Board
- Water Pump
- Low-point Water Drain Lines
- Black Holding Tank Flush System
- Gravity Water Fill
- Heated Water and Holding Tank Compartment
- Tank Level Monitor System
- Exterior Sewer Bay with Winterization System and Gravity Black and Grey Evacuation Ports
- Fresh Water Hookup for City Water and Tank Fill
- Exterior Rinse Hose with Shower Head

PLUMBING OPTIONS		38 AB	38 BB	38 CB
Water Heater	Truma AquaGo™ Comfort Instant Water Heater <sup>1</sup>	<b>UPDATED</b> D	D	D
	Aqua-Hot® 250D Heat Exchanger <sup>2</sup>	D	D	D
Water Heater Bypass System <sup>3</sup>		D	D	D

<sup>1</sup> Now controllable through the Truma control panel and the Spyder System control panels. Standard with LP coach option.

<sup>2</sup> Replaces Truma AquaGo™ Comfort instant water heater when all-electric coach option is selected. Aqua-Hot® heat exchanger provides both heated air and water.

<sup>3</sup> Standard with LP coach option. Not necessary with all-electric coach option.

### EXTERIOR

- Full-body Paint with (3) Layers of Clear Coat
- High Performance Protective Film on Front Cap and Select Areas
- (1) Girard® Side-mounted Powered Patio Awning with Integrated LED Lighting
- Girard® Slide-out Toppers
- Side-swinging Exterior Storage Doors with Gas Shocks
- Lockable Handles on Compartment Doors
- Motion-sensor Lights in Cargo Bay
- Pass-through Basement Storage
- Frameless Style Tinted Windows
- Exterior Patio Light
- Driver and Passenger Side Front Cap Exterior Entry Light
- Daytime Running Lights
- Heated Power Side-view Mirrors
- Exterior TV with Soundbar
- Fast Charge USB ports within Exterior TV Compartment
- Manual Exterior TV Compartment Door
- Entry Door Grab Handle
- Deadbolt Front Entrance Lock
- Automatic Double Entry Step
- Front Door Entry System via Key Fob <sup>1</sup>
- Mud Flaps
- Concealed Air Horn
- Single-colored Slide-out Endwalls
- Limited Edition 50th Anniversary Decal

EXTERIOR OPTIONS		38 AB	38 BB	38 CB
Lippert™ On-The-Go™ Telescoping Ladder <sup>2</sup>	<b>NEW</b>	O	O	O

<sup>1</sup> Entry system does not include exterior Spyder keypad.

<sup>2</sup> All units will ship with a Lippert™ On-The-Go™ Prepped Receiver installed.

Specifications, Features, and Options (Cont'd)

KEY : S : Standard Feature | O : Optional Feature; Additional costs may apply | D : Dependent; Availability is dependent on selection of another option | — : Not Available

INTERIOR

- Carpeted Step Well with Composite Steps
  - Handcrafted Cabinet Fascias and Doors with Concealed Hinges
  - (2) Flat-panel Televisions <sup>1</sup>
  - Solid Surface Galley Countertop
  - Treated Carpet in Slide-out Floors
- Handcrafted Slide-out Fascia
  - Soft Touch Vinyl Ceiling
  - LED Lighting
  - Prep for Washer and Dryer
  - Carbon Monoxide Detector
  - LPG Leak Detector
- Smoke Detector
  - Fire Extinguisher
  - Solar and Privacy Shades
  - Soft-closing Drawer Slides
  - Powered Roof Vents
  - Interior Grab Handle at Entry Door

INTERIOR OPTIONS		38 AB	38 BB	38 CB
Treated Fabric Suites	Soft Suede	O	O	O
	Stoney Creek	O	O	O
Ultraleathers	Taupe Hill	O	O	O
	Trail	O	O	O
Cabinetry Stain	Sandstone	O	O	O
	Shadow	O	O	O
Floor Tiles	Sea Grass Luxury Vinyl Tile	S	S	S
Washer & Dryer	Prep for Washer and Dryer	S	S	S
	Side-by-side Washer and Dryer <sup>2</sup> <b>NEW</b>	O	—	—
	Stacked Washer and Dryer	—	O	O
Bedroom Egress Door		O	O	O
Central Vacuum System	<b>NEW</b>	O	O	O

<sup>1</sup> Located in living area and bedroom.  
<sup>2</sup> Combo Washer-Dryer no longer available.

DRIVER'S COMPARTMENT

- Adjustable Driver and Passenger Seats
  - Adjustable Tilt and Telescoping Steering Column
  - Leather Wrapped Steering Wheel
  - Backlit Instrument Cluster
  - Generator Start/Stop Rocker Switch
  - Woodgrain Driver and Center Instrument Panel with Back-Lit Switches
  - USB Dash Receptacles
  - Cupholders on Driver and Passenger Side
- Forward Roof-Mounted Console with Upper Storage Compartments
  - Driver and Passenger Map Lights
  - Single-motor Intermittent Windshield Wipers
  - Automatic LED Headlights
  - Trailer Marker Light Switch Integrated with Headlight Switch
  - AM/FM Stereo with Bluetooth, Dual USB Ports, Navigation, Apple Carplay/Android Auto
  - Colored Multi-Function Touch Screen Stereo with Rear Camera
- View Activated by Reverse and Side Camera View Activated by Turn Signal
  - Side-view Cameras
  - Color Back-up Camera with Monitor
  - In-dash Navigation System
  - Front Overhead Bunk with Privacy Curtains <sup>1</sup>
  - Auxiliary Start Switch
  - Pull-cord for Air Horn
  - Powered Windows
  - Powered Door Locks
  - Privacy Curtain

DRIVER'S COMPARTMENT OPTIONS		38 AB	38 BB	38 CB
Overhead Bunk TV	<b>NEW</b>	—	—	O

<sup>1</sup> Maximum weight limit of overhead bunk is 300 pounds.

DINETTE AND LIVING AREA		38 AB	38 BB	38 CB
Driver Side Dinette	Ultraleather Booth Dinette-Sleeper <sup>1</sup>	S	—	—
	Dinette Bar	O	—	—
	Dinette Computer Workstation <sup>2</sup> <b>UPDATED</b>	O	—	—
	Ultraleather Booth Dinette with Lift TV <sup>3</sup>	—	S	S
	Dinette Bar with Lift TV	—	O	O
	Dinette Computer Workstation with Lift TV <sup>2</sup> <b>UPDATED</b>	—	O	O
Driver Side Furniture	Overhead Dinette Cabinets	S	—	—
	Ultraleather DE Sofa Bed <sup>4</sup>	S	—	—
	Theater Seating	O	—	—
Passenger Side Furniture	Bunk Beds (28" x 70")	—	—	S
	Ultraleather Air Coil Sofa Bed with Lift TV <sup>5</sup>	S	—	—
	Ultraleather Air Coil Sofa Bed with Furniture-mounted Swivel Tables <sup>5</sup>	—	S	S
	Theater Seating	—	O	O

<sup>1</sup> Piece of furniture sleeps one comfortably. Now with lift-up seat storage access.  
<sup>2</sup> The printer bump-out was removed for more leg room. The keyboard and printer trays have been converted to a drawer and a fixed shelf to maximize storage.  
<sup>3</sup> Now with lift-up seat storage access.  
<sup>4</sup> Piece of furniture sleeps one comfortably.  
<sup>5</sup> Piece of furniture sleeps two comfortably.

KITCHEN

- 20-Cubic Foot Stainless Steel Residential Refrigerator with Top Freezer <sup>1</sup>
  - Stainless Steel Convection Microwave with Exterior Venting
- Double Bowl Kitchen Sink with Single Lever Faucet and Pull-down Sprayer
  - Galley Overhead Cabinets
  - Panoramic Galley Window
- Full Tile Backsplash
  - Solid Surface Galley Countertop, Sink, and Cooktop Cover
  - Expand-An-Island

KITCHEN OPTIONS		38 AB	38 BB	38 CB
Cooking Appliances	Three-Burner Liquid Propane Cooktop <sup>2</sup>	D	D	D
	Two-Burner Induction Cooktop <sup>3</sup>	D	D	D
Drawer-style Dishwasher		O	O	O
Extendable Countertops	Expand-An-Island	S	—	—
	Flip and Fold Countertop Extension	—	S	S

<sup>1</sup> Refrigerator volume is approximated.  
<sup>2</sup> Standard with LP coach option.  
<sup>3</sup> Replaces three-burner liquid propane cooktop when all-electric coach option is selected.

BEDROOM

- Bedside Windows
  - Bed Comforter with Throw Pillows
- Strategically Placed, Handcrafted Privacy Door
  - LED Reading Lights
  - Nightstand with Solid Surface Tops
- Mounted Flat-panel TV
  - Centralized Entertainment Center <sup>1</sup>
  - Ceiling Fan

BEDROOM OPTIONS		38 AB	38 BB	38 CB
Mattress	Memory Foam King Mattress (72" x 80")	S	S	S
	Memory Foam Queen Mattress (60" x 80")	O	O	O
Bed Slide	Overhead Cabinets with Headboard	S	S	—
	Overhead Cabinets	—	—	S
	Window at Head of Bed <sup>2</sup>	—	—	D
	Mounted Headboard <sup>3</sup>	—	—	D
Under Bed Storage		—	S	S
Bedroom Storage	Wardrobe with Drawers Underneath	S	S	—
	Floor-to-ceiling Closet Space	—	—	S

<sup>1</sup> Houses Blu-ray™ player, satellite receiver, and cable TV hook-up.  
<sup>2</sup> Not available with optional bedroom egress door.  
<sup>3</sup> Standard with optional bedroom egress door.

BATHROOM

- (1) Porcelain Master Bathroom Sink
  - Solid Surface Lavatory Top
  - One-Piece Molded Fiberglass Shower
- Shower Skylight
  - Shower LED Light with Sliding Cover
  - Towel and Toilet Paper Holders
- Mirrored Medicine Cabinet
  - Roof Vent Fan
  - Base Cabinet

BATHROOM OPTIONS		38 AB	38 BB	38 CB
Number of Bathrooms	(1) Bathroom	S	—	S
	(1) Bathroom and (1) Half-bath	—	S	—
Shower	One-Piece Molded Fiberglass Shower (28.5" x 40.5")	S	S	—
	One-Piece Molded Fiberglass Shower (34.5" x 34.5")	—	—	S
Toilet	(1) Gravity Flush Toilet	S	—	S
	(1) Electric Gravity Flush Toilet and (1) Macerator Toilet	—	S	—

1

YEAR OR 12,000 MILES  
LIMITED WARRANTY

5

YEARS OR 50,000 MILES  
DELAMINATION  
LIMITED WARRANTY

10


YEARS OR 50,000 MILES  
CONSTRUCTION  
LIMITED WARRANTY

1

YEAR COACH  
ROADSIDE SERVICE

∞

ONGOING  
CUSTOMER SUPPORT

FOR PARTS & SERVICE CALL 256.356.0261 OR VISIT [TIFFINMOTORHOMES.COM](http://TIFFINMOTORHOMES.COM)  
105 2ND ST NW RED BAY, AL 35582  



©2023 Tiffin Motorhomes, Inc. Allegro®, Allegro Breeze®, Allegro RED®, Phaeton®, Allegro Bus®, Zephyr®, Wayfarer®, Roughing It Smoothly®, Open Road®, PowerGlide®, and Cahaba® are registered trademarks of Tiffin Motorhomes, Inc. All rights reserved.  
For all information concerning the limited warranty provided by Tiffin, please refer to the full written limited warranty set forth on the Tiffin website or held by our authorized dealerships. Please note, some interior furnishings not included. Revised: 2/28/23